

Esthoj Engineering  
Construction & Facility  
Management

*("The Construction and Engineering Professionals")*

# TABLE OF CONTENTS



A Word from our Founder & Chief Executive Officer

Esthoj Engineering Construction

Esthoj Facilities Management

Management Team

Our Professional Memberships/ Qualifications

Organization Chart

Project Photographs

Selected Projects with Contract Values

Contact Details

## A WORD FROM OUR FOUNDER & CEO



There is nothing more thrilling than seeing a project come to life and functioning within budget and time. With every client we work with, we always take their best interests at heart. Besides, we love what we do and we know what works. So, let's work together to build our cities and nation.

**E**sthoj Engineering Construction & Facility Management Limited was established in 2018 and registered with the Corporate Affairs Commission (CAC) as a subsidiary of Esthoj Multi-Disciplinary Group. With well over a decade in Construction Consultancy Services both at the local and international spheres, it became crystal clear that we have a role to play by getting involved beyond consultancy provision into actual translation of ideas and dreams into reality on the ground. Equipped with the knowledge and requisite skills to transform ideas into realities, we are creators that work hard to realize our clients' visions every day. "If you can imagine it, we can do it." Our Core Values of Integrity, Accountability, Excellence, Innovation, Safety and delivery define our work ethic and guide our workforce in today's rapidly changing and challenging world.

Our code of conduct supports our principles and outlines the standards of behavior we expect from our people. We also believe in creating a high-performance work culture that's fair and welcoming to all.

- ❖ We take personal ownership
- ❖ We walk the talk
- ❖ We adopt open, honest communication
- ❖ We demonstrate real teamwork
- ❖ We develop our people

If you have an idea, we can build it. We believe collaboration is key to a successful project.

**Dr. OLORUNKIYA JOSHUA**, PhD, M.Sc, B.Sc, HND, CCM, MRICS, MCIInstCES, MACostE, MAACE, MCIQB, MAPM, AAIQS, MBIFM, AMNIM, , MSCL.

## MISSION & VISION



**Our mission:** *To develop, build and service Nigeria's physical infrastructure for living, working and traveling*

**Our Vision:** *To be the leading provider of construction services in Nigeria.*

**Our Values:** At Esthoj Engineering Construction & Facility Management, our ultimate goal is to deliver a high level of quality to our customers. In this, we mean not only the quality of our built products and service outcomes, but also the quality of the way in which they are delivered, reliably, safely and responsibly. We believe that we can best deliver the level of quality to which we aspire by concentrating on four core values:

- ❖ Being **customer-centric**, focusing on the broader needs of our customers and not simply the structures that we build for, and services we provide to them.
- ❖ Being **resource-rich**, able to combine our own extensive local resources with the global resources of our shareholders in a way that puts us ahead of local competition.
- ❖ Being **innovative**, a technology enabled, learning organisation that is committed to finding better ways of doing things that make the most efficient and sustainable use of available resources.
- ❖ Being **risk-managers**, having the foresight, attentiveness to detail and tenacity to anticipate and effectively deal with the problems and challenges that construction inevitably entails.

## FOCUS ON OUR CUSTOMERS



### Focused on customer needs

At Esthoj Engineering Construction & Facility Management, we strive to focus on our customers' needs and how we can best use our abilities and **resources** to add value for them by developing **innovative solutions** and **managing risk**. We like to work "with" rather than just "for" our customers and pride ourselves on the imagination, skill and high standards that we apply to all our projects.

### Strategies:

- ❖ To focus on customer needs and develop long-term relationships.
- ❖ To have a comprehensive range of business streams delivering a diversified range of construction services.
- ❖ To have best in class management and technical competence.
- ❖ To be technically innovative and flexible in our approach to business.
- ❖ To participate throughout the project life-cycle from idea through construction, operation and maintenance to decommissioning and renewal.
- ❖ To grow organically and through acquisition in existing and new markets.

### Services

We offer a complete construction service for a wide range of project types, including commercial and residential properties, industrial facilities, M&E and Rail, Ports, Roads, Bridges, Tunnels and Water and Wastewater Plant. Our service extends over the full project life-cycle from initial site survey and design through construction to commissioning and ongoing maintenance.

## OUR PARTNERS & CAPABILITIES



We take on commissions of all sizes, regularly undertaking small as well as multi-million Naira projects.

### Our Partners

Esthoj Engineering Construction & Facility Management advocates partnering, an approach that aims to assist key participants in a project, to work more effectively to complete the project without conflicts. It invites formalized management that helps all parties design team, client, main contractor, subcontractors and suppliers - work together as a team. We welcome our potential vendors who are interested to be our business partners to provide us their information by completing the **Vendor Approval Questionnaire (VAQ)**.

### Capabilities

- ❖ Building and M&E Services
- ❖ Commercial / Residential Buildings
- ❖ Design & Build
- ❖ Heavy Foundations Engineering
- ❖ General Industrial
- ❖ Hotels & Leisure
- ❖ Logistics
- ❖ Partnering
- ❖ Pharmaceutical & Biotechnology
- ❖ Pre-construction Services
- ❖ Railways, Roads & Bridges
- ❖ Underground Engineering

## STRIVE FOR EXCELLENCE

### Journey to Excellence

We're committed to excellence, in everything that we do. Achieving this isn't our end goal but rather how we play the game. We think in terms of a journey to excellence, where we are continually raising the bar and challenging ourselves to make every day worthwhile. Our vision is supported by our values and behaviours which help us towards our goal of delivering value to our customers and our people.

### Strive for Excellence

- ❖ Challenge to get the best
- ❖ Be ambitious
- ❖ Be assertive

### Achieve success through collaboration

- ❖ Be respectful
- ❖ Seek and give feedback
- ❖ Innovate and share knowledge

### Make every day Worthwhile

- ❖ Be proud of what we achieve
- ❖ Have fun
- ❖ Enjoy work

## CELEBRATE SUCCESS



We were the first company in our sector to provide a one-stop shop services from Consulting, Construction and Facility Management in the country, thereby giving birth to our slogan ***"The construction and Engineering Professionals"***.

### Customer Satisfaction

We know that to deliver excellent service we must achieve more than the cornerstones of time, cost, quality and safety.

Our commitment to creating customer satisfaction shapes how we work, from process improvements down to the objectives set for each employee. It places our customer at the heart of our organization, providing a simple gauge for decision making; does this add value to our customers? Our satisfaction scores have increased over the Customer Focused approach.

### Actively Listening

The Heartbeat is our formal process for monitoring satisfaction levels by asking each customer how they think we are performing, helping to understand expectations and benchmark performance for improvement, allowing us to

- ❖ Report project performance against customer drivers
- ❖ Develop prioritized project action plans
- ❖ Continually improve against previous best



## STRIVE FOR EXCELLENCE



### Social Responsibility

For us, corporate responsibility is not just a policy on the wall, its how we've always done business. Acting responsibly is inseparable from our overall objective of achieving long term customer satisfaction. Achieving this goal assigns responsibility not only to the company, but to every individual involved in our operations - requiring a proactive and preventative approach.

### Working Safely

We are an industry leader in promoting safety, bench marking our performance and driving through improvement. Our commitment to 'safer working' is illustrated as a Constructing Excellence case study for best practice and innovation.

### Public

"Creating buildings that meet that service the needs and meet the expectations of a demanding public audience is challenging. We have developed an enviable reputation for delivering complex projects through the array of our personnel who have participated in various scope of projects within and outside the shore of the country. We focus on technically exacting projects, as this is where we can truly add value for our customers. Be it achieving BREEAM excellent, providing an iconic building or meeting immovable programme dates, we respond to the specific needs of our customers and work together to deliver value-for-money solutions that stand up to public scrutiny."

"Retail is a dynamic sector that complements our skills perfectly."



## Retail

We provide facilities management for high street retailers where we deliver bespoke solutions, focusing on delivering efficiency improvements. We also deliver complex mixed use schemes, which, whilst anchored by retail, are inclusive of major commercial, leisure and residential elements. We undertake all forms of CapEx projects including small refurbishments, extensions and refits to live stores, new store projects of any size as well as new build and extensions to live distribution operations. Our success and growth in this sector comes by mirroring our customers' ethos of building customer loyalty through quality, price and service. Our offering is based on service, delivery and technological expertise delivering high class products to meet demanding targets. En route, we view our customer's customers as if they were our own, ensuring that we deliver our service with minimal impact to the retail shopping experience."

## Mixed Use

"We provide high quality office, retail, leisure and mixed-use developments throughout the Country. We are one of the longest established commercial property developers in the country. A wide variety of developments continues to support a strong track record and demonstrates our commitment to continued innovation in commercial property. Our specialist teams work in partnership with our customers to provide the best solution to their property development requirement. By working together, we deliver adaptable buildings that maximize our customers' capital investment, by **supporting changing business needs.**"

**"Retail is a dynamic sector that complements our skills perfectly.**



**Energy:** "We have a multi disciplined team providing a wide range of services from consultancy and conceptual studies through to commissioning and decommissioning facilities.

**Our key services are:**

- ❖ Design and construction
- ❖ Technically led project management
- ❖ Structural assessment and repair
- ❖ Seismic assessment and upgrades
- ❖ Surveillance and testing
- ❖ Decommissioning and waste management
- ❖ Energy management consultancy

We offer specialist advice and consultancy services to support our customers through challenging issues whilst at the same time maintaining a clear focus on achieving the desired project outcomes."

**Education**

"With a successful track record in Building Schools. (BSF) and delivery of academies, we are gaining a reputation for delivering high quality and affordable solutions within the education marketplace.

## OUR TEAM



- ❖ **Dr. OLORUNKIYA JOSHUA OLUTAYO**  
PhD, M.Sc, B.Sc, HND, CCM, MRICS, MCIInstCES, MACostE, AAIQS, MAACE, MCIQB, MAPM, MSCL, MNIQS, MBIFM, AMNIM,
- ❖ **ENG. SEBASTINE OKONUFA,**  
M&E ENGINEER, MSE, COREN
- ❖ *FEMI OLUTONA, MNIQS, RQS*
- ❖ *ENGR. EMMANUEL OLAGUNJU*  
*CIVIL ENGINEER, MNSE, COREN*
- † *ARC. OBED EGHODALE*

## The symbols of our expertise & professionalism


 Esthoj Engineering  
 Construction & Facility  
 Management  
("The Construction and Engineering Professionals")

Association for Project Management, UK	
Association for Advancement of Cost Engineering, USA	
Australian Institute of Project Management, Australia	
Association of Construction Project Managers, South Africa	
British Institute of Facilities Management	
Chartered Institute of Arbitrators, UK	

## The symbols of our expertise & professionalism


 Esthoj Engineering  
 Construction & Facility  
 Management  
("The Construction and Engineering Professionals")

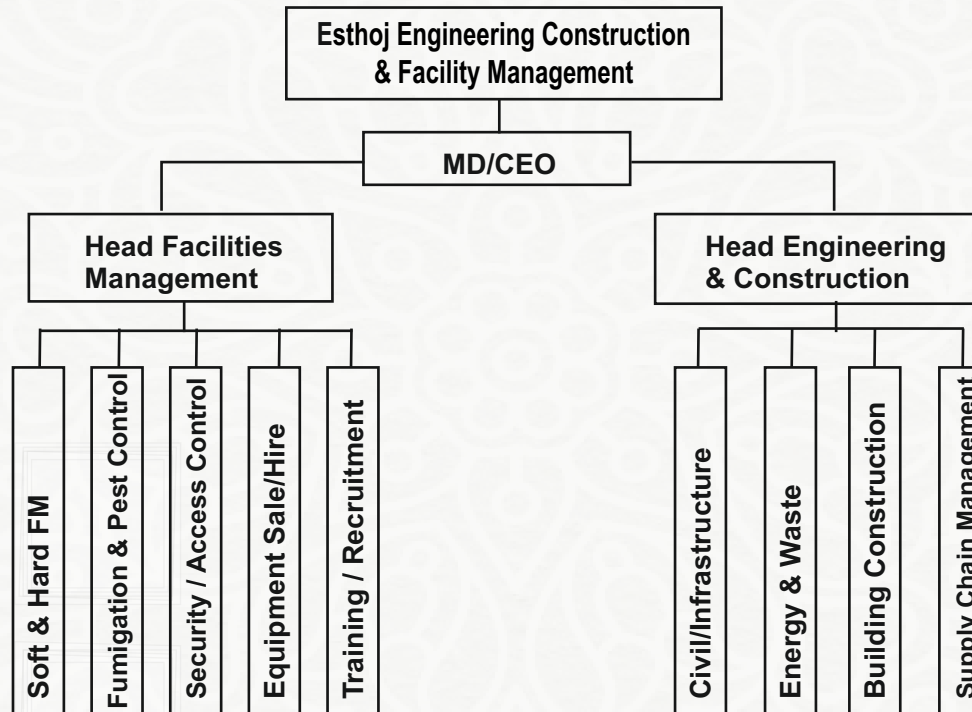
Association for Project Management, UK	
Association for Advancement of Cost Engineering, USA	
Australian Institute of Project Management, Australia	
Association of Construction Project Managers, South Africa	
British Institute of Facilities Management	
Chartered Institute of Arbitrators, UK	

## The symbols of our expertise & professionalism



Chartered Institute of Building, UK	
Nigerian Institute of Management - Chartered	
Nigerian Institution of Quantity Surveyors	
Nigerian Institution of Building	

# ORGANOGRAM



## GREAT DEEDS ARE USUALLY WROUGHT AT GREAT RISK : Herodotus - Greek Historian,

Risk is something that we all live with from time to time. Small risks can even add flavour and spice to our lives but, in business, it is vital that risks are identified and action taken to resolve the potential problems they present. Few organization are better equipped to do that than Esthoj Engineering Construction & Facility Management.



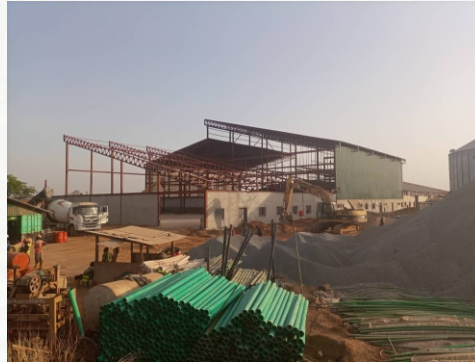
# PROJECTS

 Esthoj Engineering  
Construction & Facility  
Management  
("The Construction and Engineering Professionals")



# PROJECTS

Esthoj Engineering  
Construction & Facility  
Management  
("The Construction and Engineering Professionals")



# PROJECTS

Esthoj Engineering  
Construction & Facility  
Management  
("The Construction and Engineering Professionals")



# PROJECTS

 Esthoj Engineering  
Construction & Facility  
Management  
("The Construction and Engineering Professionals")



# PROJECTS

 Esthoj Engineering  
Construction & Facility  
Management  
("The Construction and Engineering Professionals")



# PROJECTS

 Esthoj Engineering  
Construction & Facility  
Management  
("The Construction and Engineering Professionals")



# PROJECTS

 Esthoj Engineering  
Construction & Facility  
Management  
("The Construction and Engineering Professionals")



# PROJECTS

 Esthoj Engineering  
Construction & Facility  
Management  
("The Construction and Engineering Professionals")





# PROJECTS

 Esthoj Engineering  
Construction & Facility  
Management  
("The Construction and Engineering Professionals")



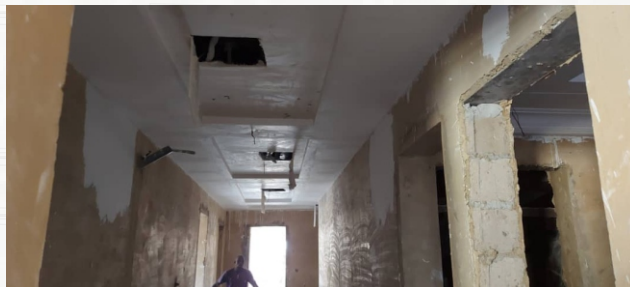
# PROJECTS

 Esthoj Engineering  
Construction & Facility  
Management  
("The Construction and Engineering Professionals")



# PROJECTS

 Esthoj Engineering  
Construction & Facility  
Management  
("The Construction and Engineering Professionals")



# PROJECTS

Esthoj Engineering  
Construction & Facility  
Management  
*("The Construction and Engineering Professionals")*



# PROJECTS

 Esthoj Engineering  
Construction & Facility  
Management  
("The Construction and Engineering Professionals")



# PROJECTS

 Esthoj Engineering  
Construction & Facility  
Management  
(\*The Construction and Engineering Professionals\*)



# PROJECTS

 Esthoj Engineering  
Construction & Facility  
Management  
(\*The Construction and Engineering Professionals\*)



# PROJECTS

 Esthoj Engineering  
Construction & Facility  
Management  
(\*The Construction and Engineering Professionals\*)





# PROJECTS

 Esthoj Engineering  
Construction & Facility  
Management  
("The Construction and Engineering Professionals")



# PROJECTS

 Esthoj Engineering  
Construction & Facility  
Management  
("The Construction and Engineering Professionals")



# PROJECTS

 Esthoj Engineering  
Construction & Facility  
Management  
("The Construction and Engineering Professionals")



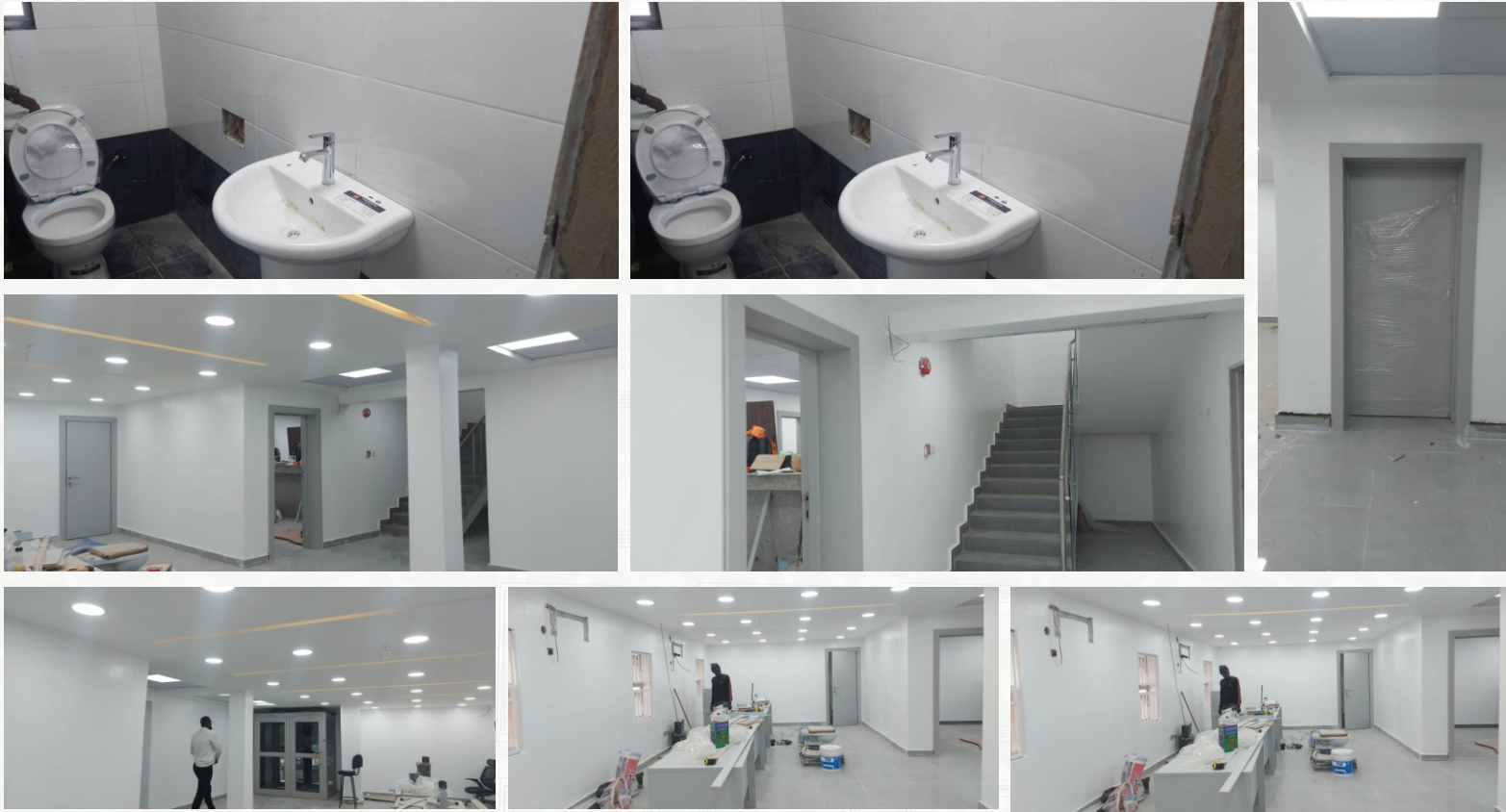
# PROJECTS

 Esthoj Engineering  
Construction & Facility  
Management  
(\*The Construction and Engineering Professionals\*)



# PROJECTS

 Esthoj Engineering  
Construction & Facility  
Management  
("The Construction and Engineering Professionals")



# PROJECTS

 Esthoj Engineering  
Construction & Facility  
Management  
*("The Construction and Engineering Professionals")*



# PROJECTS

 Esthoj Engineering  
Construction & Facility  
Management  
(\*The Construction and Engineering Professionals\*)



# PROJECTS

 Esthoj Engineering  
Construction & Facility  
Management  
("The Construction and Engineering Professionals")

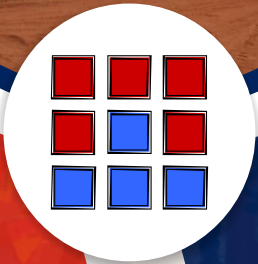




# PROJECTS

 Esthoj Engineering  
Construction & Facility  
Management  
("The Construction and Engineering Professionals")





**Tel: 08140989555, 09051602999**

**10, Lennar Hillside Estate, Kubwa - Abuja.**

**Email: [esthojconsults@gmail.com](mailto:esthojconsults@gmail.com), [joe\\_kiya@yahoo.co.uk](mailto:joe_kiya@yahoo.co.uk)**

**[www.esthoj.com](http://www.esthoj.com)**

**@ACC STUDIO | 09083986435**